



# Quantitative Analysis of IgG Antinuclear Antibody in Chronic Periodontitis Patients

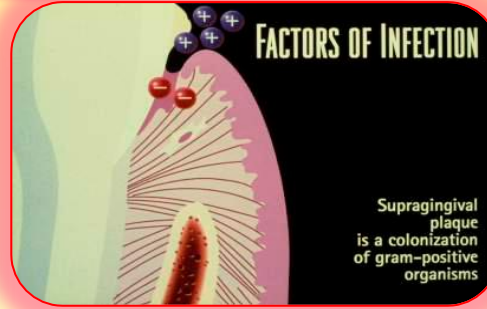
Batool H. Al-Ghurabei PhD (1)  
Hind Wael Al-Alousi MSc (1)  
Ahmed A. Al-Hassan PhD (2)  
(1) College of dentistry  
Baghdad University  
(2) College of medicine  
Al-Nahrain University

## Introduction

Periodontitis is a bacterial infection of tooth-supporting tissues, the immunopathologic mechanisms include inflammatory cells and chemical mediators, which persist inflammation and develops a local autoimmune



Chronic periodontitis



Supragingival plaque is a colonization of gram-positive organisms

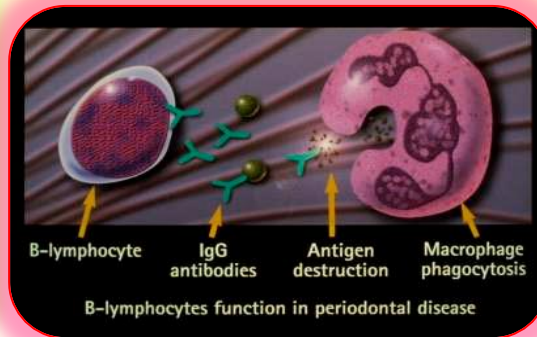
Gram negative bacteria as a cause of chronic periodontitis

## Aim of Study

To provide evidence of altered humoral immune response in chronic periodontitis

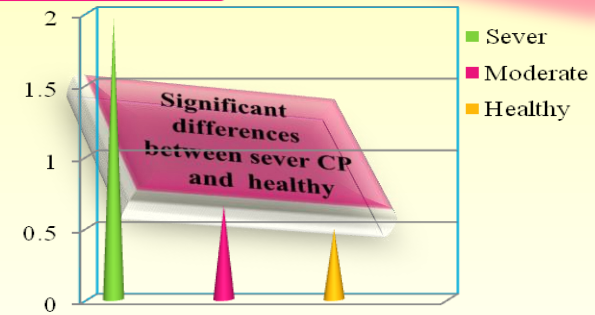
## Subjects & Methods

Blood samples were collected from 35 patients with CP (20 with severe periodontitis and 15 with moderate periodontitis) and from 30 healthy age matched individuals served as controls. The levels of serum ANA was determined using enzyme-linked immunosorbent assays.

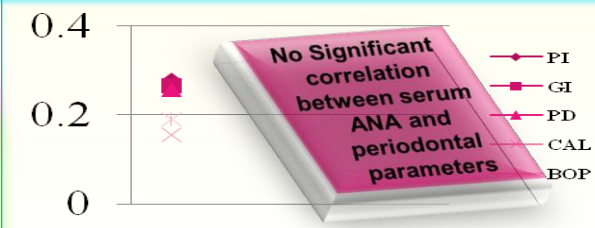


B-Lymphocyte Function in periodontitis

## Results



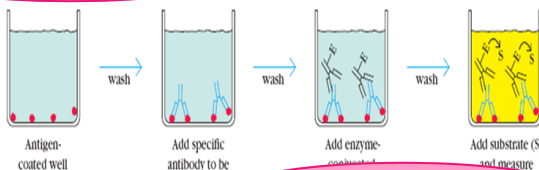
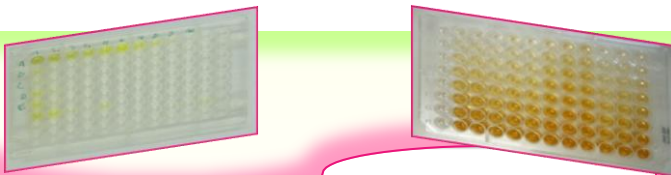
Mean serum ANA among three groups



Correlation between ANA and periodontal parameters

## Conclusion

The production of antibodies against self structures, could be involved in the pathogenic mechanism of chronic periodontitis.



ELISA Method